

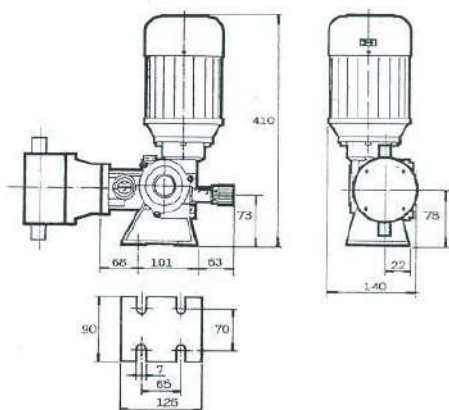
DRM-11



CARACTERÍSTICAS TÉCNICAS technical characteristics

Material Cabezal y Válvulas pumphead and valves material	PVC ; PVDF ; Inox-Aisi-316
Regulación adjustment	Manual 0-100%
Membrana diaphragm	NBR+PTFE
Carrera stroke	11 mm
Cárter gearbox	Aluminio con baño de aceite Alluminium lubricate gearbox
Potencia Motor motor power	1/3 hp
Voltaje voltage	50hz: 230V Monof-single-phase 230/400V Trif-three-phase 60hz: 440V Trif-three-phase

DIMENSIONES dimensions



Tipo type	Qmax [l/h]	Pmax [bar]	Ø membrana Ø diaphragm	Válvulas valves	Imp/min
DRM-11X70.A	90				58
DRM-11X70.B	123	8	70	½"	96
DRM-11X70.C	154				116
DRM-11X90.A	148				58
DRM-11X90.B	202	5	90	¾"	96
DRM-11X90.C	255				116
DRM-11X105.A	201				58
DRM-11X105.B	275	3	105	¾"	96
DRM-11X105.C	331				116
DRM-11X120.A	225				58
DRM-11X120.B	308	3	120	1"	96
DRM-11X120.C	408				116