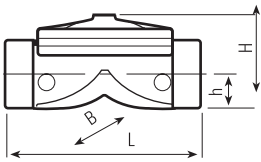


Engineering Bulletin

Información Técnica para Proyectos

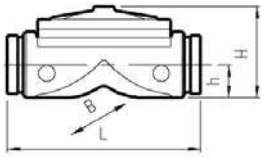
RAF altos Caudales en línea

Dimensiones y pesos.



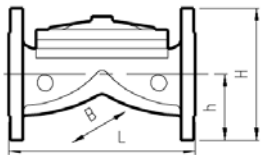
Roscada

Diámetro		L	H	B	h	Peso
[Pulgada]	[mm]	[mm]	[mm]	[mm]	[mm]	[Kg]
1	25	156	70	94	21	1.5
1.5	40	159	80	96	29	2
2	50	190	100	125	38	3.5
2.5	65	216	110	125	46	5
3-2-3	80-50-80	230	125	125	50	5
3	80	290	138	200	50	11
4	100	346	220	230	60	16.5



Ranurada

Diámetro		L	H	B	h	Peso
[Pulgada]	[mm]	[mm]	[mm]	[mm]	[mm]	[Kg]
1	25	156	70	94	21	1.4
1.5	40	159	80	96	29	1.5
2	50	190	100	125	38	3
2.5	65	216	110	125	46	4.7
3-2-3	80-50-80	230	125	125	50	4.8
3	80	290	138	200	50	10.8
4	100	346	220	230	60	18
6	150	412	241	300	88	33
8	200	470	350	354	125	51



Bridada

Diámetro		L	H	B	h	Peso
[Pulgada]	[mm]	[mm]	[mm]	[mm]	[mm]	[Kg]
2	50	190	159	165	76	7.9
2.5	65	216	173	185	80	9.3
3-2-3	80-50-80	230	175	200	100	11
3	80	283	200	200	100	17.5
4	100	305	220	230	99	26
6	150	406	295	300	142	46
8	200	470	383	354	160	67.5
10	250	635	430	464	197	111
12	300	749	474	480	234	151
14	350	749	520	520	260	177

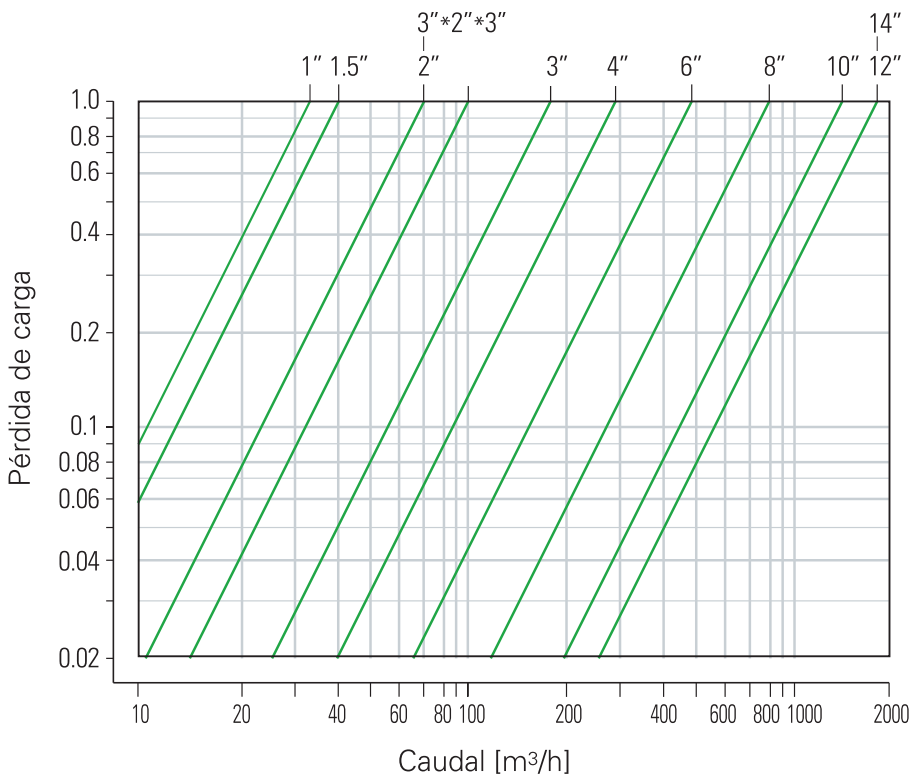
Kv-Coeficiente

Diámetro		Kv
[Pulgada]	[mm]	
1	25	32
1.5	40	40
2.0	50	70
2.5	65	100
3-2-3	80-50-80	72
3	80	170
4	100	290
6	150	490
8	200	790
10	250	1400
12	300	1800
14	350	1800

Volumen de la cámara de control

Diámetro		Volumen de la cámara de control
[Pulgada]	[mm]	[litro]
1	25	0.065
1.5	40	0.065
2	50	0.08
2.5	65	0.16
3-2-3	80-50-80	0.08
3	80	0.3
4	100	0.78
6	150	1.56
8	200	3.5
10	250	7.6
12	300	7.6
14	350	7.6

Gráficas de pérdida de carga



Kv = coeficiente de caudal [m³/h]; [bar]

Cv = coeficiente de caudal [m³/h]; [bar]

Q = caudal, [m³/h]; [gpm]

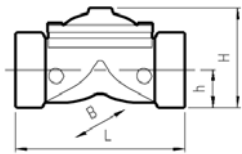
ΔP = pérdida de carga en la válvula [bar]; [psi]

$C_v = 1.16 K_v$

$$Q = K_v \sqrt{\Delta P}$$

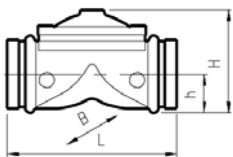
RAF D en Línea

Dimensiones & Pesos



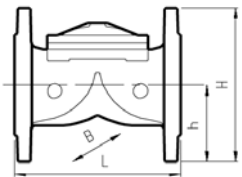
Roscada

Diámetro		L	H	B	h	Peso
[Pulgada]	[mm]	[mm]	[mm]	[mm]	[mm]	[Kg]
3D	80-65-80	244	127	138	50	5.5



Ranurada

Diámetro		L	H	B	h	Peso
[Pulgada]	[mm]	[mm]	[mm]	[mm]	[mm]	[Kg]
3D	80-65-80	244	127	138	50	5.2
4D	100-80-100	285	180	200	74	17.5
6D	150-100-150	330	260	230	96	19.8



Bridada

Diámetro		L	H	B	h	Peso
[Pulgada]	[mm]	[mm]	[mm]	[mm]	[mm]	[Kg]
3D	80-65-80	216	192	200	92	11.4
4D	100-80-100	283	222	222	111	20
5D	125-100-125	305	243	250	120	29.5
6D	150-100-150	325	285	285	143	34.5

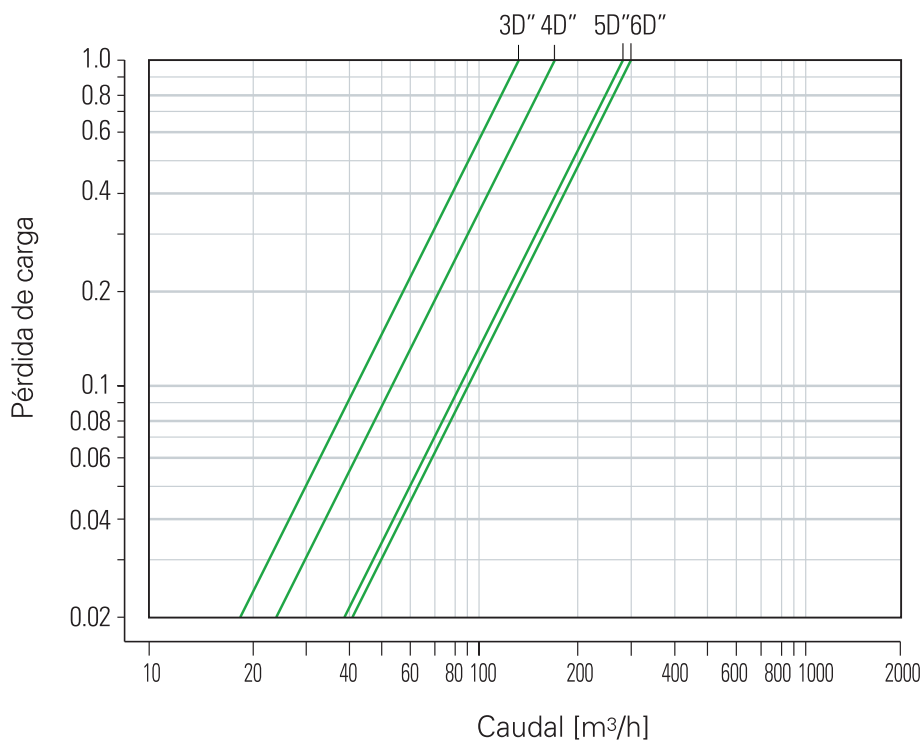
Kv-Coeficiente

Diámetro		Kv
[Pulgada]	[mm]	
3D	80-65-80	130
4D	100-80-100	170
5D	125-100-125	290
6D	150-100-150	300

Volumen de la cámara de control

Diámetro		Volumen de la cámara de control
[Pulgada]	[mm]	[litro]
3D	80-65-80	0.16
4D	100-80-100	0.3
5D	125-100-125	0.7
6D	150-100-150	0.7

Gráficas de pérdidas de carga



Kv = coeficiente de caudal [m³/h]; [bar]

Cv = coeficiente de caudal [m³/h]; [bar]

Q = caudal, [m³/h]; [gpm]

ΔP = pérdida de carga en la válvula [bar]; [psi]

$Cv = 1.16 Kv$

$$Q = Kv \sqrt{\Delta P}$$

On/Off

Nivel

PRV

PSV

Seguridad

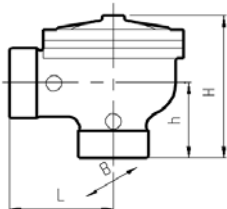
Pilotos y Accesorios

Información Técnica

RAF Alto Caudal en Ángulo

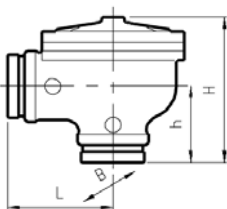
Dimensiones y pesos

Roscada



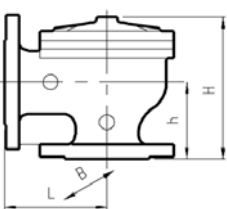
Diámetro		L	H	B	h	Peso
[Pulgada]	[mm]	[mm]	[mm]	[mm]	[mm]	[Kg]
2	50	90	150	125	81	4.2
2.5	65	117	160	125	83	7
3-2-3	80-50-80	110	146	125	72	4.9
3	80	148	205	200	107	12
4	100	150	227	230	118	15.9

Ranurada



Diámetro		L	H	B	h	Peso
[Pulgada]	[mm]	[mm]	[mm]	[mm]	[mm]	[Kg]
2	50	90	150	125	81	4
2.5	65	117	160	125	83	5
3-2-3	80-50-80	110	146	125	72	4.7
3	80	148	205	200	107	11
4	100	150	227	230	118	15.6
6	150	206	317	300	150	32
8	200	225	400	354	170	45.5

Bridada



Diámetro		L	H	B	h	Peso
[Pulgada]	[mm]	[mm]	[mm]	[mm]	[mm]	[Kg]
2	50	112	159	165	77	8.1
2.5	65	122	160	185	83	11
3-2-3	80-50-80	140	200	200	100	12
3	80	154	210	200	115	19
4	100	177	230	230	113	26.5
6	150	218	315	300	148	48.7
8	200	225	400	354	170	62.5

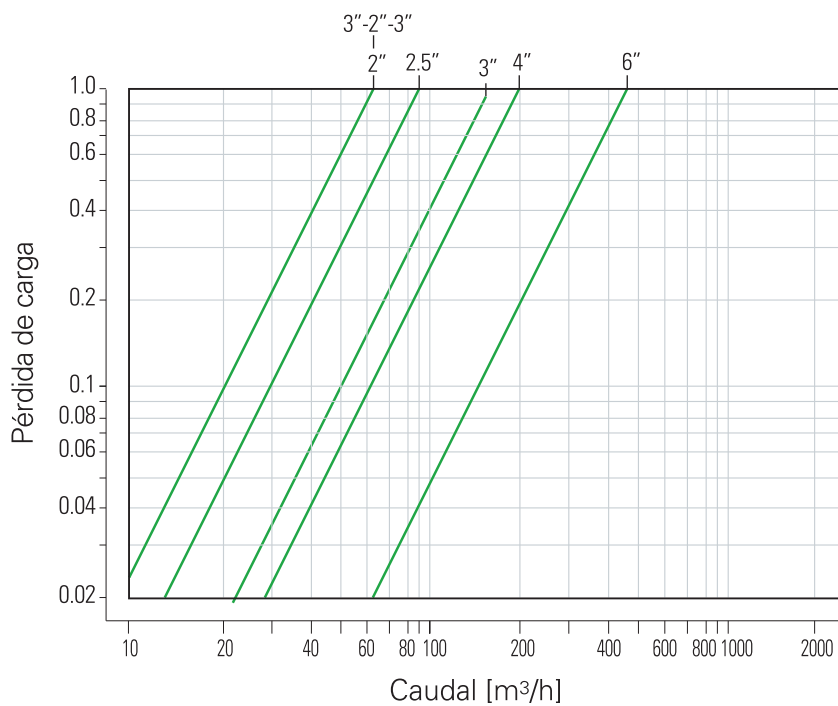
Kv-Coeficiente

Diámetro		Kv
[Pulgada]	[mm]	
2	50	62
2.5	65	90
3-2-3	80-50-80	62
3	80	155
4	100	200
6	150	470

Volumen de la cámara de control

Diámetro		Volumen de la cámara de control
[Pulgada]	[mm]	[litro]
2	50	0.08
2.5	65	0.16
3-2-3	80-50-80	0.08
3	80	0.3
4	100	0.78
6	150	1.56

Gráficas de pérdidas de carga



Kv = coeficiente de caudal [m³/h]; [bar]

Cv = coeficiente de caudal [m³/h]; [bar]

Q = caudal, [m³/h]; [gpm]

ΔP = pérdida de carga en la válvula [bar]; [psi]

Cv = 1.16 Kv

$$Q = Kv \sqrt{\Delta P}$$

On/Off

Nivel

PRV

PSV

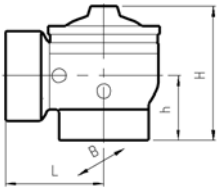
Seguridad

Pilotos y
Accesorios

Información
Técnica

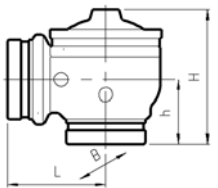
RAF D en Ángulo

Dimensiones y pesos



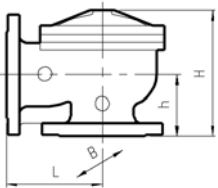
Roscada

Diámetro		L	H	B	h	Peso
[Pulgada]	[mm]	[mm]	[mm]	[mm]	[mm]	[Kg]
3D	80-65-80	130	170	140	86	46



Ranurada

Diámetro		L	H	B	h	Peso
[Pulgada]	[mm]	[mm]	[mm]	[mm]	[mm]	[Kg]
3D	80-65-80	130	170	140	86	5.5
4D	100-80-100	157	220	200	114	11
6D	150-100-150	206	315	300	150	28.3



Bridada

Diámetro		L	H	B	h	Peso
[Pulgada]	[mm]	[mm]	[mm]	[mm]	[mm]	[Kg]
3D	80-65-80	130	215	200	115	11.65
4D	100-80-100	155	225	220	110	19.5

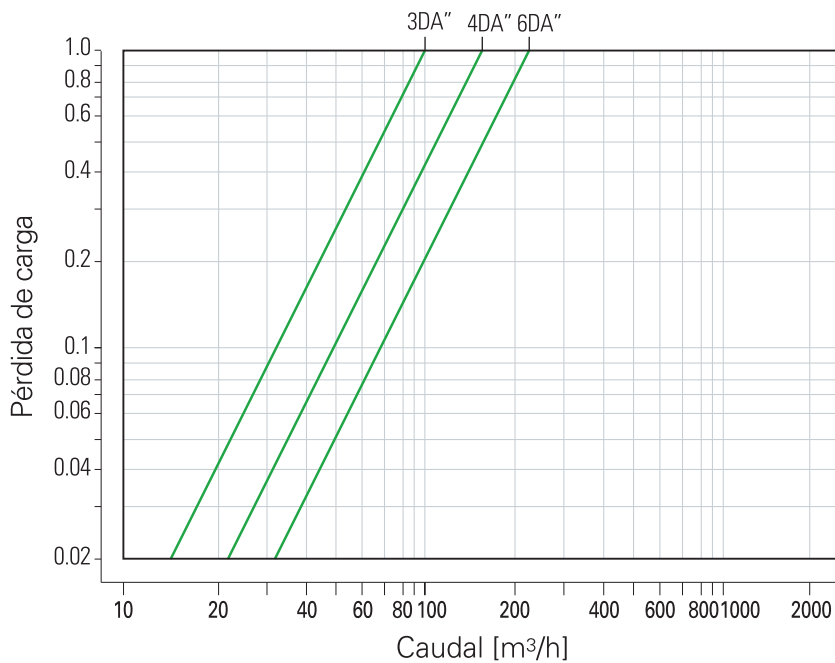
Kv-Coeficiente

Diámetro		Kv
[Pulgada]	[mm]	
3D	80-65-80	100
4D	100-80-100	155
6D	150-100-150	220

Volumen de la cámara de control

Diámetro		Volumen de la cámara de control
[Pulgada]	[mm]	[litro]
3D	80-65-80	0.16
4D	100-80-100	0.3
5D	125-100-125	0.7
6D	150-100-150	0.7

Gráficas de pérdidas de carga



Kv = coeficiente de caudal [m³/h]; [bar]

Cv = coeficiente de caudal [m³/h]; [bar]

Q = caudal, [m³/h]; [gpm]

ΔP = pérdida de carga en la válvula [bar]; [psi]

$Cv = 1.16 Kv$

$$Q = Kv \sqrt{\Delta P}$$

On/Off

Nivel

PRV

PSV

Seguridad

Pilotos y Accesorios

Información Técnica