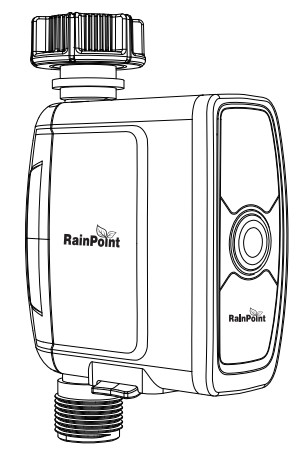




WIFI IRRIGATION WATER CONTROLLER SYSTEM USER MANUAL

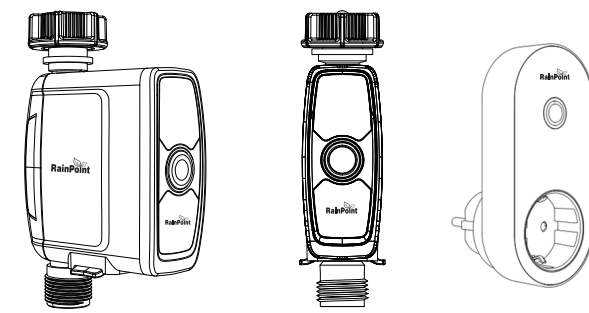
ITV0103W



Manual

1. Production Overview
2. Product Appearance
3. Website and QR Code
4. Main Functions
5. Illustrated Operating Instructions
6. Connection and Basic Information
7. Manual Operation
8. Plans and Setting
9. Sensor Connection
10. Tap-to-Run & Automation Irrigation
11. Tips
12. Warranty & Warning
13. Basic Parameters of the device

Production Overview



Downloading the App

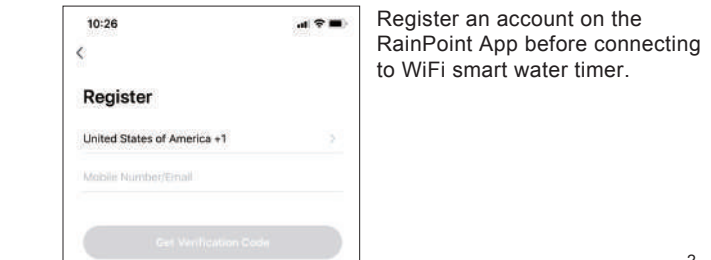


Main Function

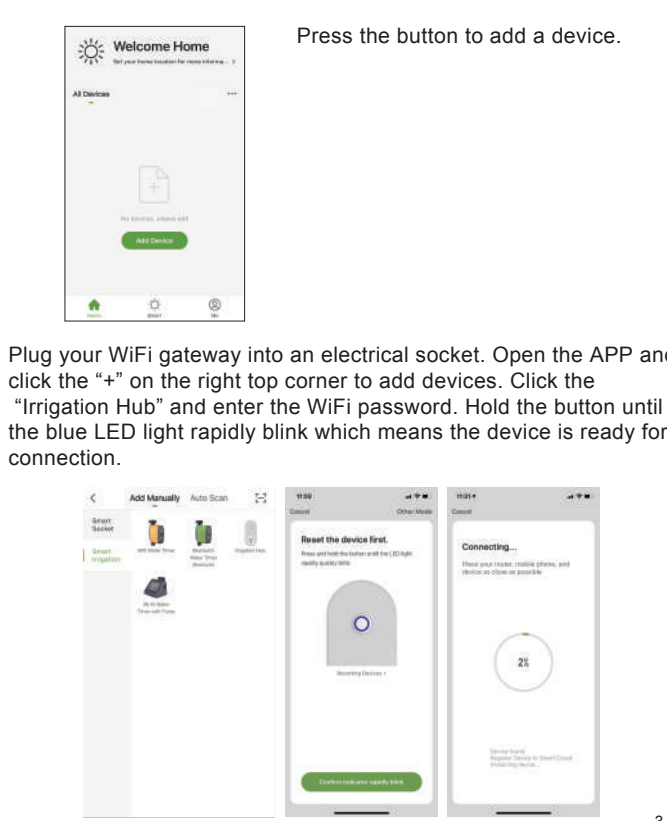
- This kit includes one WiFi water timer and one WiFi gateway
- One gateway can pair with maximum 4 WiFi water timers
- 433MHz RF communication with WiFi gateway and Water Timer
- The WiFi gateway may also be used as WiFi timer socket connecting with Wi-Fi
- Set and check irrigation schedule through smart phone APP.
- Available to work with soil moisture sensor
- One Wi-Fi timer can pair one gateway and one Wi-Fi gateway can pair one soil moisture sensor
- Delay the irrigation schedule base on the data from soil sensor
- Manually ON/OFF the water timer
- Water flow meter function
- With Irrigation mode and Mist mode options for watering
- Low power indicator
- With built-in filter
- Water-leakage alert

Illustrated Operating Instructions

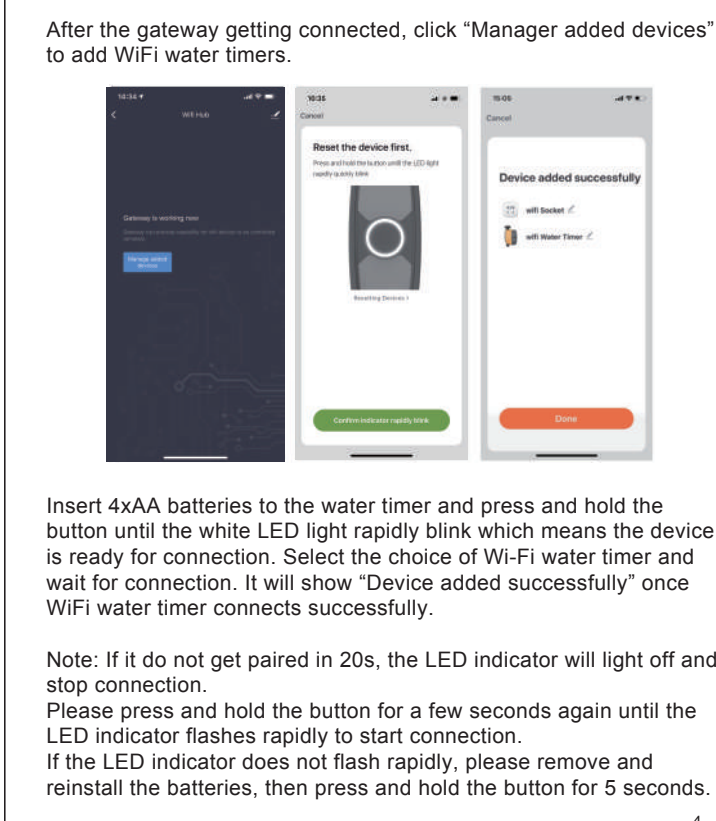
1. Connection and Basic Information



Register an account on the RainPoint App before connecting to WiFi smart water timer.



Press the button to add a device. Plug your WiFi gateway into an electrical socket. Open the APP and click the "+" on the right top corner to add devices. Click the "Irrigation Hub" and enter the WiFi password. Hold the button until the blue LED light rapidly blink which means the device is ready for connection.



After the gateway getting connected, click "Manager added devices" to add WiFi water timers.

Insert 4XAA batteries to the water timer and press and hold the button until the white LED light rapidly blink which means the device is ready for connection. Select the choice of Wi-Fi water timer and wait for connection. It will show "Device added successfully" once WiFi water timer connects successfully.

Note: If it do not get paired in 20s, the LED indicator will light off and stop connection. Please press and hold the button for a few seconds again until the LED indicator flashes rapidly to start connection. If the LED indicator does not flash rapidly, please remove and reinstall the batteries, then press and hold the button for 5 seconds.

Note: If the water timer already paired with one gateway before, once it has been re-insert batteries, the LED light will slowly blink, it means the device is searching the gateway automatically.

After finishing the connection, all the paired devices will be displayed on the page. The "Wi-Fi Socket" can set the gateway socket's power ON or OFF. Click the WiFi Water Timer and get into the main page of the device.

The following information will be shown on the page: **Temperature unit selection, Last water usage, Soil Moisture and Temperature (if already connected the sensor), Battery status, Mode and Next irrigation time.** The background color will turn red if the moisture of soil is higher than setting.

At the bottom, there is an operating panel with several options: **Parameter, Irrigation control, Plan, Sensor and My.**

After clicking the right top button, there is a basic information and operation board with several different options: **Device information, Tap-to-Run and Automation and other basic functions and services** for the device.

Shared the device and setting to your home member who has added on the family group.

There are some existing Q&A to solve problems. **Tip: Please e-mail our customer service or call us by phone to get support if you need more help.**

2. Manual Operation
Manual mode: Click the "Irrigation control" to manually turn ON/OFF the water timer and set the start time.

Tips: The connection delay will be around 0.5 to 1 seconds, please do not repeatedly press the button.

3. Plans and Setting
3.1 Schedule overview

On the Schedule page, there are Daily notices of a week. Plan detail display board and rain delay selections.

There are three plans that can be set in total. Each plan has a unique represent color, which will be shown under the day mark as a point after turned on.

The setting detail of each plan is shown under as a row and the on/off button is on the right side.

The Rain delay (Watering Delay) can set with 24H, 48H and 72H.

3.2 Plan Setting
Click the Plan A/B/C to set daily irrigation schedule and rain delay plan. The Irrigation schedule includes two mode: **Irrigation mode and Mist Mode.** Different mode have different setting options and both of them can be set with 12-hour or 24-hour.

The figure shows that irrigation mode watering 20 minutes. Start time is 10 AM every Tuesday, Wednesday and Thursday.

The figure shows: mist mode spray 30 seconds of every 5 minutes, duration time is 4 hours (starting from 10:00 am and stop at 3:00 pm).

4. Sensor (Not including)

4.1. Sensors can be connected to monitor the soil moisture and temperature, and then the data will be displayed as a graph. When the soil moisture goes high, the water timer will stop watering automatically once customer set the "stop watering moisture level".

4.2. The water timer has its own water flow monitoring function and users can check the daily water consumption and last water usage. (The minimum monitoring water flow is 25L/H).

5. Tap-to-Run & Automation Irrigation
The Tap-to-Run and Automation planning systems are at "Smart" selection which in the middle of the bottom panel.

Click the plus sign at the right top corner and schedule a smart plan. There are some options to set up: **Condition, Task and other personal options.**

There are many options shown on the page to select and a variety of conditions can be added at the same time. In the device condition, the basic options of the connecting devices are related to the data from the WiFi timer and sensors.

The plan will be triggered when any single condition is met or all conditions are met at the same time. All the data of current conditions is automatically searched online by the App.

Different task could be set: **Tap to Run, Enable or Disable Automation, Send Notification, Delay and Device Option.** When the conditions are triggered, the task will be executed.

After finishing setting, icons will be found under Tap-to-Run and Automation. The button on the right can enable or disable the Automation plan. The Tap-to-Run function connects different plans and devices at the same time to enable "One-Click Management".

Tips and Warnings

5.1. Please make sure the smart phone is near the Wi-Fi water timer when connecting or setting the watering plan. The best range for operation or connection is within 60 meters in the open area.

5.2. The watering timer will follow and perform the preset watering schedule after application set successfully, even if the phone is out of the best Connecting range.

5.3. LED light meaning:

a. White and rapidly blink: ready for pairing to smart phone;

b. White and slowly flash: searching the connecting gateway;
c. Red and blink every 6 seconds: low batteries power warning;
d. Red and breathing light blink: water leaking when turn off the water timer;
e. Red when searching a sensor: does not find the sensor.

Warranty & Warning

WARRANTY
The warranty aims for the problem of non-artificial damage and provides a one-year warranty from the date of leaving the factory.

WARNING

1. Under freezing temperatures, timers should be removed from the faucet and stored indoors to avoid potential freezing damage.
2. Please clean filters regularly and replace if it is worn in order to prolong life of timer.

Basic Parameter of the device

TECHNICAL PARAMETER

- 1"BSP or 3/4" NH inlet
- 3/4" outlet thread
- Working pressure: 0.5 bar to 8 bar(10PSI-120PSI)
- Max flow: 5L/min to 35L/min
- Water proof: IP54
- Working temperature: 0 C to 50 C (37°F-122°F)
- Battery life: over one year
- WiFi timer power by 4 AA batteries, WiFi gateway power by AC power